



BONAIR BIZTALK ADAPTER

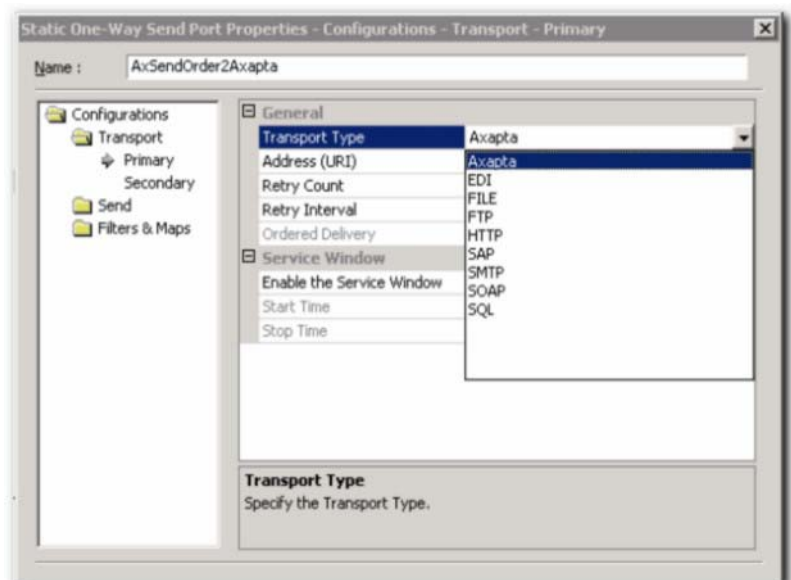
Bonair BizTalk Adapter for Axapta facilitates integration of the system Axapta in the version of 2.5 or 3.0 with the BizTalk Server 2004 system without the need of programming in BizTalk. The Adapter allows creating the port in the BizTalk sending documents (**One-Way Port** or **Solicit-Response Port**) directly to the Axapta system.

The extra type of the transport is accessible after installing the Adapter in the BizTalk system: 'Axapta'. The adapter requires installing the COM client for Axapta system and implementing classes in the Axapta system which operates import of documents coming from BizTalk. Classes in the Axapta system can be created on the basis of exemplifying classes accessible with the adapter.

The concept of the Adapter application

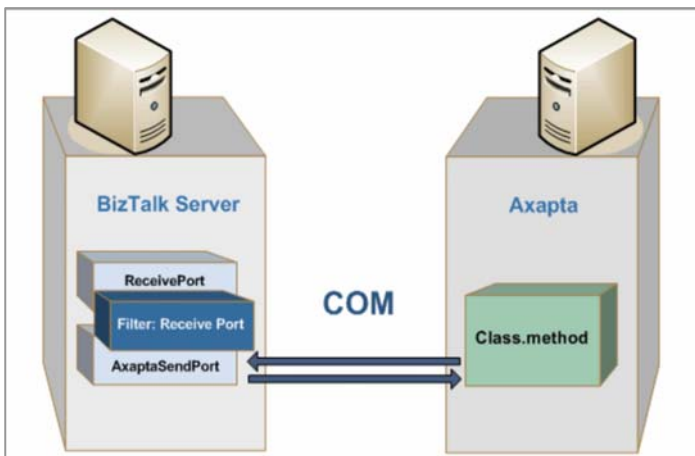
The adapter in the 1.0 version operates messages leaving the BizTalk 2004 system to Axapta system. Adapter in version 1.0 handles outgoing messages from BizTalk 2004 to Axapta. Messages sent from the Axapta system to BizTalk can be operated apart from the adapter, e.g. through the export Axapta documents into the catalog and setting the monitoring at the catalog. The next version of the adapter will handle outbound and inbound documents via http services.

The adapter can operate any formats of documents e.g. XML, EDI, flat file, etc.



After receiving the document intended for Axapta by the BizTalk server, **Bonair BizTalk Adapter for Axapta** runs the pointed method of the Axapta class, delivering the document to the system as the parameter and he is expecting the answer in case of the **Solicit-Response** port. The called method of the Axapta system should be implemented in such a way, which would be visible through the COM protocol and after receiving the document was saving him to the Axapta system in the suitable way.

The following schema is illustrates the method of working of the port with the assigned type of the transport 'Axapta'.



CONFIGURATION OF THE ADAPTER

Default parameters of the system are given in the configuration of the adapter registered in the console of administrator, like in **Axapta Configuration Utility**.

When configuring the type of the transport 'Axapta' it is possible to change parameters of the connection pointed in the configuration of the adapter and to give the name of the class and methods, which will be called after receiving the message.

Bonair BizTalk Adapter for Axapta is able to be connected with the server **Axapta Object Server (AOS)** or to work in the mode 'of thick client'.

Errors and exceptions reported by the Axapta system during sending documents from the BizTalk server to Axapta are visible in BizTalk Server managing tools (e.g. Health and Activity Tracking, Event Viewer).

